



PARTNERSHIP

Hot Springs Metro Partnership
Growing Hot Springs

Hot Springs Fact Sheet

Location



- Hot Springs
- ★ Little Rock, AR (55mi)
- Texarkana, AR (118 mi)
- Fayetteville, AR (182 mi)
- Memphis, TN (188 mi)

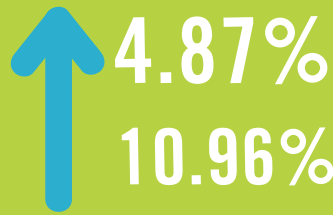


Garland County

County Seat: Hot Springs
Population: 98,000
Median Household Income: \$40,444
Growth Rate: Population steadily growing at a rate of 1,000/year for the past 70 years.

SOURCE: <https://www.census.gov>

Tax Collections Growth from 2014-2016



Average Annual City Sales Tax Collections Growth

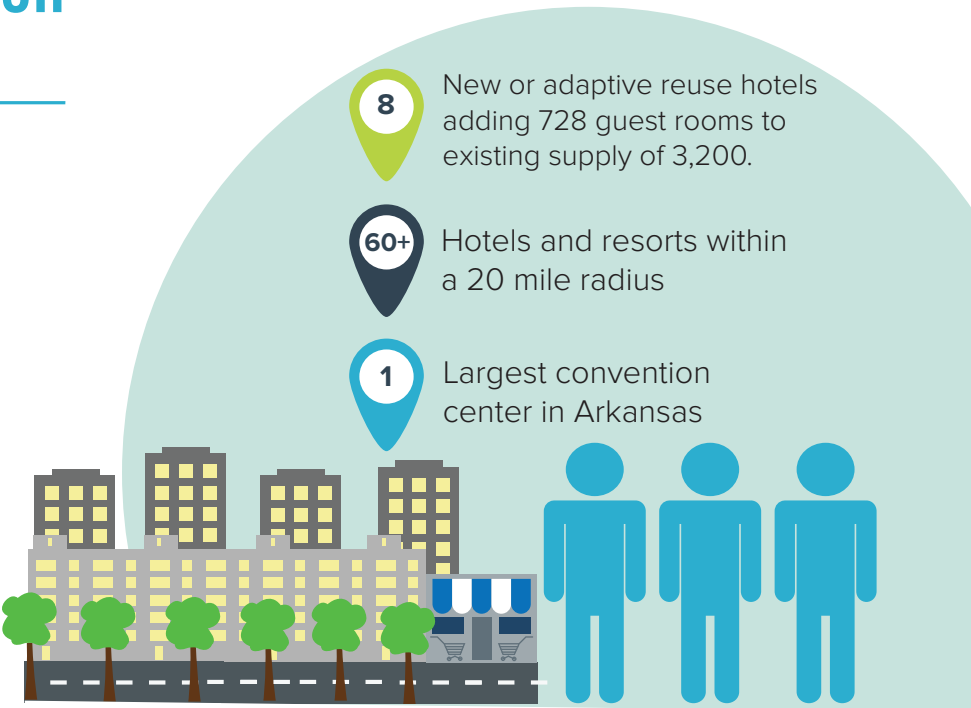
Average Annual Tourism Sales Tax Collections Growth

SOURCE: City of Hot Springs Tax Collections

Tourism Industry

Known as America's First Resort, Hot Springs enjoys a robust economy built upon its area attractions and events.

#1 Travel Destination in Arkansas



SOURCE: 2014 Visitor Economic Impact Study

Outdoor Recreation

Hot Springs is positioned well for outdoor recreational retail due to its proximity to the following

Hot Springs National Park

250 total miles of hiking and biking trails

3 IMBA Certified Epic Biking Trails



44 miles of trails under construction by IMBA

Ouachita National Forest

5 Lakes

SOURCE: <https://www.imba.com>

Hot Springs Village

This nearby retirement destination makes a major impact on area retail, restaurants and attractions.

Largest Gated Community in the United States

Population 14,024

Annual Disposable Income Spent Locally \$371 Million

Median Household Income \$54,236

SOURCE: Hot Springs Village Chamber of Commerce, 2016 Impact Study

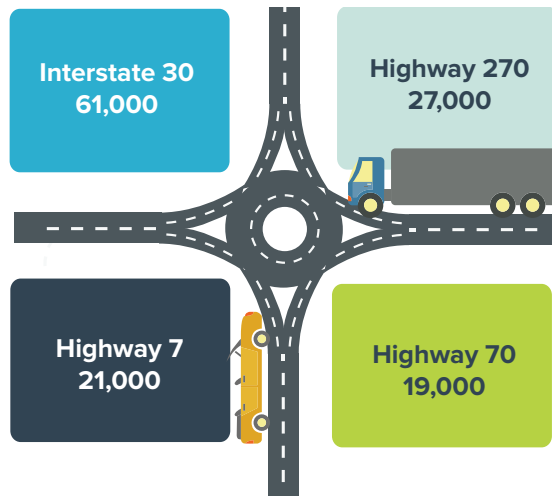


Central Avenue named one of the Top 10 Streets in America by the American Planning Association in 2014

SOURCE: <http://www.planning.org>

Traffic Count

Daily Average in 2015



SOURCE: <http://www.arkansashighways.com>

2015-16 Economic Development Data

\$133M Capital Investment
356 Net New Primary Jobs Announced

SOURCE: <http://www.hot Springsmetropartnership.com>

Historic Downtown District

Serving as the front door to the National Park, Downtown Hot Springs is experiencing a Main Street Renaissance.



SOURCE: <http://www.hot Springsmetropartnership.com>

Gary Troutman
President & CEO
Hot Springs Metro Partnership
gary.troutman@growinghotsprings.com
501.321.1700

Cole McCaskill
Vice President of Economic Development
Hot Springs Metro Partnership
cole.mccaskill@growinghotsprings.com
501.321.1700